

## Flying Drones Riviera Airport Regulations (V1.0)

**Legal basis:** the DATEC ordinance on special categories of aircraft (RS:748.941, OACS) Art 18(A)(2) applies.

**Drone certification:** responsibility of the operator

### **Background:**

- Riviera aerodrome is characterized by different types of air traffic:
  - o Rotary-wing flights (helicopters)
  - o Air Force school and maintenance flights
  - o Single-engine airplanes private flights
  - o Drone flights
  - o Flights of model airplanes
- LSPR is an aerodrome with no air traffic service, this implies that aircraft crews only transmit information useful for a smooth and safe operation.
- Drone flights using flying area ALPHA will be considered as the other traffic operating at the airport, consequently they will need to have sufficient knowledge in aeronautical radio communications and carry a portable radio capable of transmitting and receiving communications on the airport's frequency (119.625). Otherwise, a qualified person must assist them throughout the flight.

### **Practical Aspects:**

- Permissions for drone flights on the “Alpha”, “Bravo” and “Charlie” sectors are granted only by the field chief.
- Flight operations must be carried out according to the regulations in force in Switzerland (EASA Regulations). The operator and pilot remain responsible for their compliance.
- Each drone operator must be authorized to conduct the required flight. To determine whether all conditions are fulfilled, the drone guide available on the FOCA website and attached, shall be used as a reference:  
<https://www.bazl.admin.ch/bazl/it/home/drohnen/verstaendnishilfe/drohnenguide.html>

- Each new drone operator must make the first flight at Riviera Airport under the supervision of the field chief who will determine whether he or she has adequate knowledge in aeronautical radio communication and flight procedures. If so, the operator will be allowed to operate independently always in accordance with the rules mentioned in these regulations.
- The zones shown in the maps attached (Annexes 1 and 2) apply to flights. The preferred area "on the runway" remains the number 3, as it is less conflicting with rotary-wing traffic.
- For flying areas Alpha & Charlie the drone operator who should hear on frequency the arrival or departure of another aircraft must immediately land, clear the runway, and wait for traffic to land or take off.
- The drone operator shall always wear the yellow high-visibility vest and remains responsible for the safe conduct of the flight.
- Aircrafts always have priority over drone traffic.
- The three flight zones shall be demarcated by geofencing/RTL procedure and the drone shall be equipped with the RTH (return to home) function.

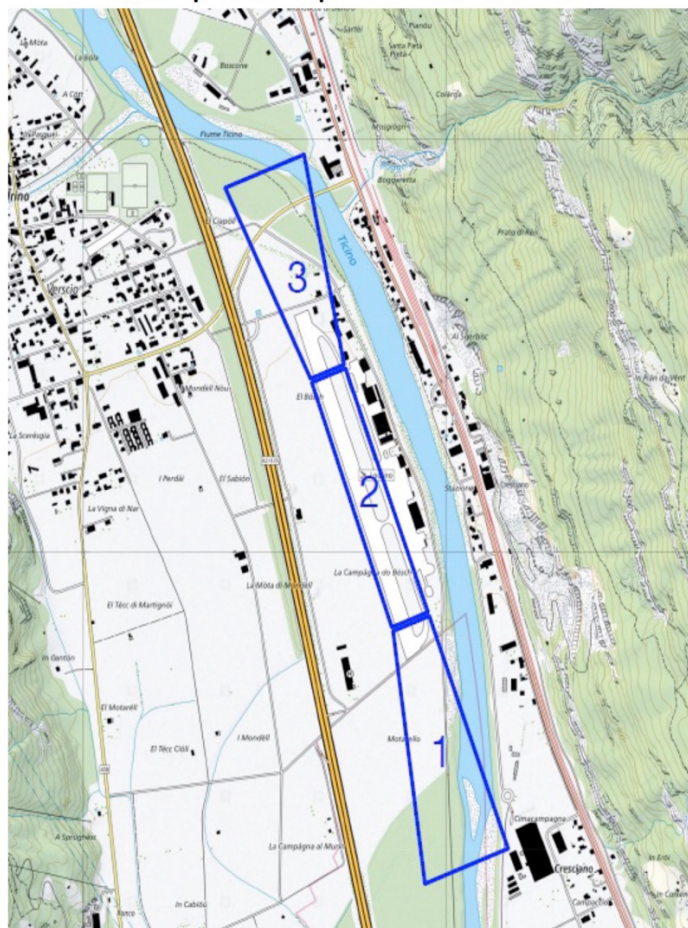
Lodrino, 20th July 2023

Chief of aerodrome

Rocco Bustelli

## Flying area "ALPHA"

### Settori predefiniti per attività di volo droni



### Quote di volo massime

- Settore 1: 2'500 piedi/mare
- Settore 2: 1'500 piedi/mare
- Settore 3: 1'500 piedi/mare

Flying area "BRAVO". Max altitude: 10 m.





Flying area "CHARLIE". Max altitude: 10 m.

